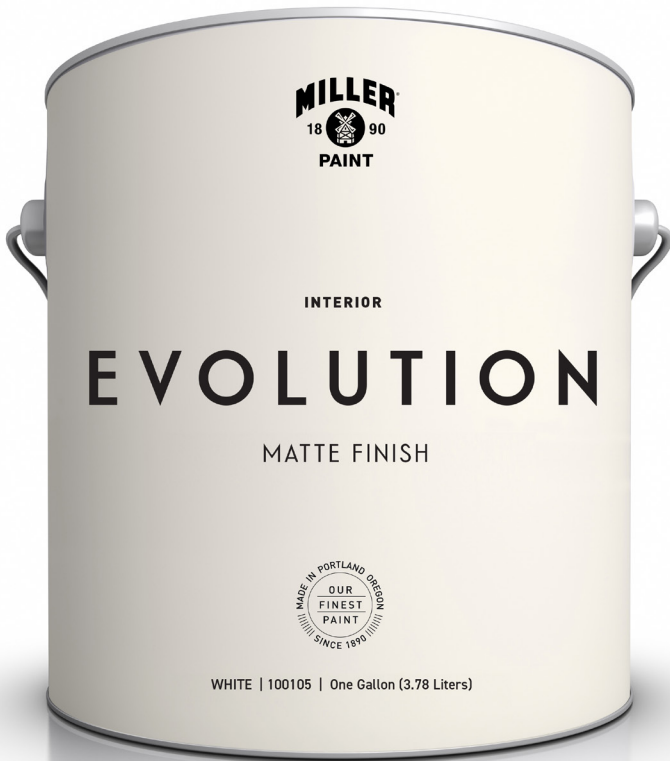




Evolution[®] Interior

OUR FINEST PAINT



Evolution Interior has been formulated with an advanced resin system for enhanced performance. With superior coverage and exceptional hide, you can feel the smooth, luxurious finish of Evolution Interior with every brushstroke. Combined with excellent splatter and stain resistance, Evolution Interior is the top choice for homeowners and professional alike. Make your home a part of our legacy with Evolution, Our Finest Paint. Available in Matte, Soft Sheen, Satin Cabinet & Trim, and Semigloss Cabinet & Trim.

- Advanced acrylic resin system
- Superior coverage
- Exceptional hide
- Smooth, highest quality finish
- Excellent splatter and stain resistance
- Superior washability and easy clean up

MATTE FINISH

Our finest interior coating enhanced with Ceramic Technology for use on walls where a durable flat finish is desired. The matte finish offers the minimal light reflection of a flat with increased washability. Also a great choice for use on walls with uneven surfaces.

SOFT SHEEN

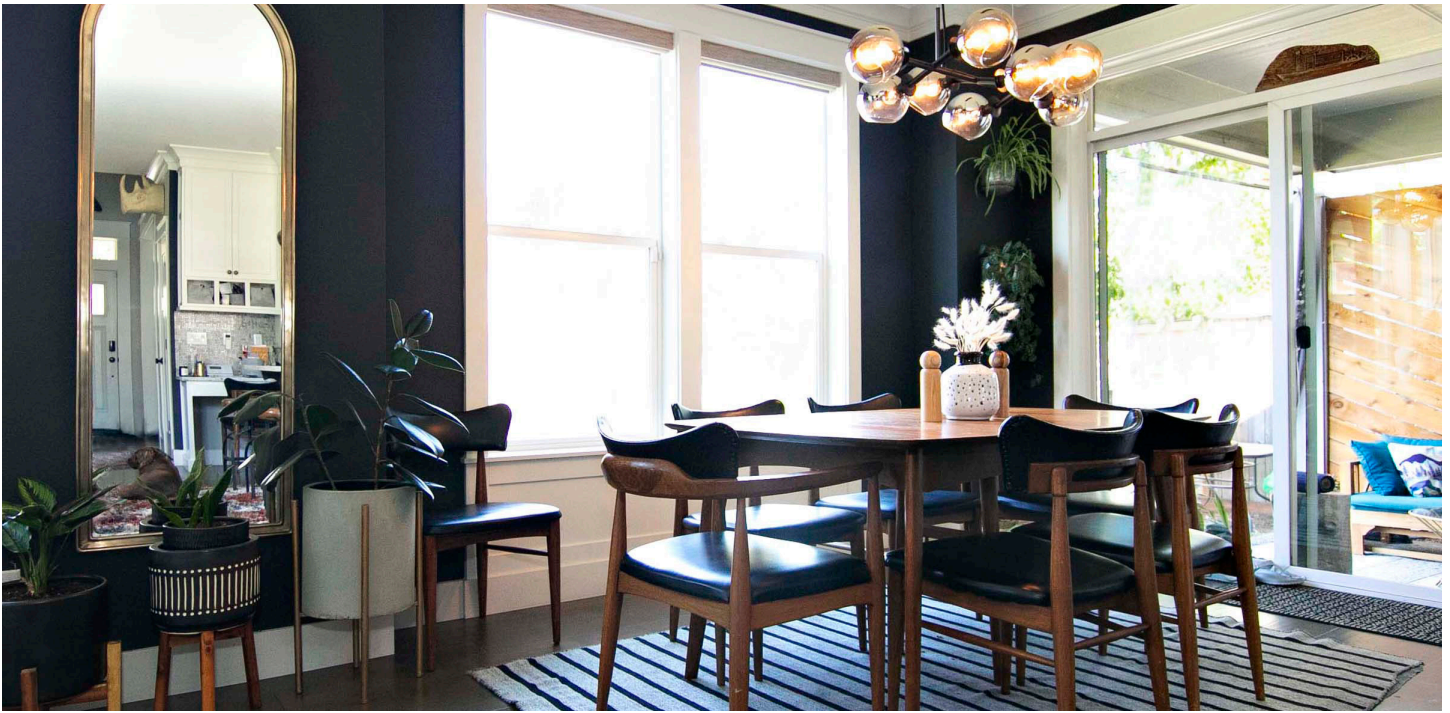
Our superior quality, thick & creamy, durable wall coating will minimize dirt pick-up and is washable. Ideal for projects where a deep, rich look and some sheen and washability are desired.

SATIN CABINET & TRIM

This unique, silky texture captures and reflects deeper tones and richer hues. Formulated for application on doors, cabinets and trim, this is superb choice when working on high traffic surfaces. This durable coating resists blocking and stains while providing all of the elegance of the COLOR EVOLUTION Collection.

SEMIGLOSS CABINET & TRIM

Evolution Interior Semigloss Trim is our finest coating for use on doors, trim, and cabinets where a durable semigloss finish is desired. The semigloss finish offers exceptional durability, resistance to dirt pick-up, and washability.



SPECIFICATIONS FOR EVOLUTION INTERIOR

INTERIOR WALL FINISH

	MATTE FINISH	SOFT SHEEN
VOLUME SOLIDS	41.0%	41.0%
VISCOSITY	100-105 KU	100-105 KU
WEIGHT PER GALLON	11.6 (LB)	11.4 (LB)
GLOSS	<5% @85°	<5-10% @85°
V.O.C. (MINUS WATER)	47.0 G/L	45.0 G/L

CABINET & TRIM FINISHES

	SATIN	SEMIGLOSS
VOLUME SOLIDS	39.0%	36.5%
VISCOSITY	105-110 KU	105-110 KU
WEIGHT PER GALLON	11.0 (LB)	10.4 (LB)
GLOSS	10-20% @85°	45-55% @60°
V.O.C. (MINUS WATER)	48.0 G/L	48.1 G/L



COVERAGE: Approximately 350-400 square feet per gallon @ 1.5 dry mils. Two coats recommended for even coverage. Coverage depends on porosity and profile of the surface.

DRY TIME: 30 minutes to touch and 2 hours to recoat @ 70°F and 50% relative humidity.

ABOUT MILLER PAINT

Manufactured in Portland, Oregon since 1890, Miller Paint is an employee-owned company with over 50 stores throughout Oregon, Washington and Idaho. Miller Paint products are specifically formulated for the Pacific Northwest climate and are known for outstanding quality and durability. Praised for exceptional customer service and color expertise, Miller Paint is the region’s go-to paint for homeowners and professionals alike.

For a location near you, go to www.millerpaint.com

Specification figures should be taken as accurate for products being produced at the time of publication in untinted white bases only. Formulation improvements may be made from time to time that may affect these figures to some degree. Manufacturing tolerances of +/-2% are considered acceptable. Whenever a change is made that the Manufacturer considers substantial, the specification will be revised. Miller and Miller Paints are registered trademarks of Miller Paint Co., Inc. Portland, OR. REV 9/16